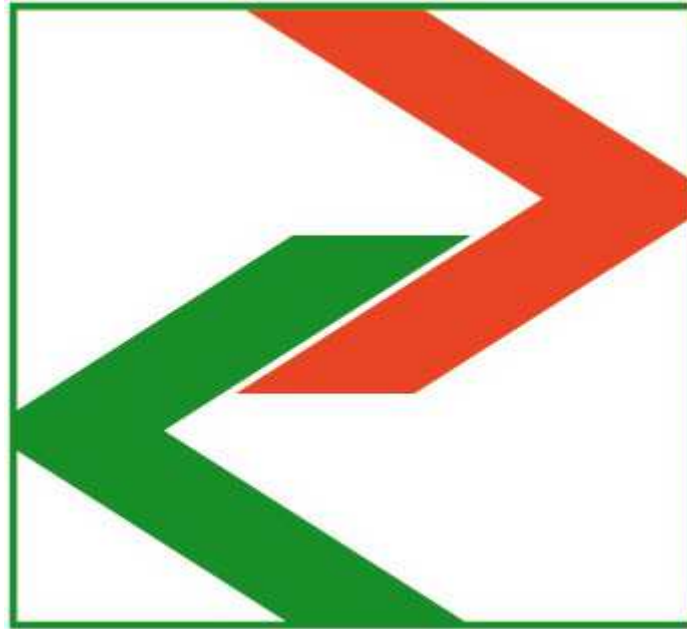


Association of European Border Regions



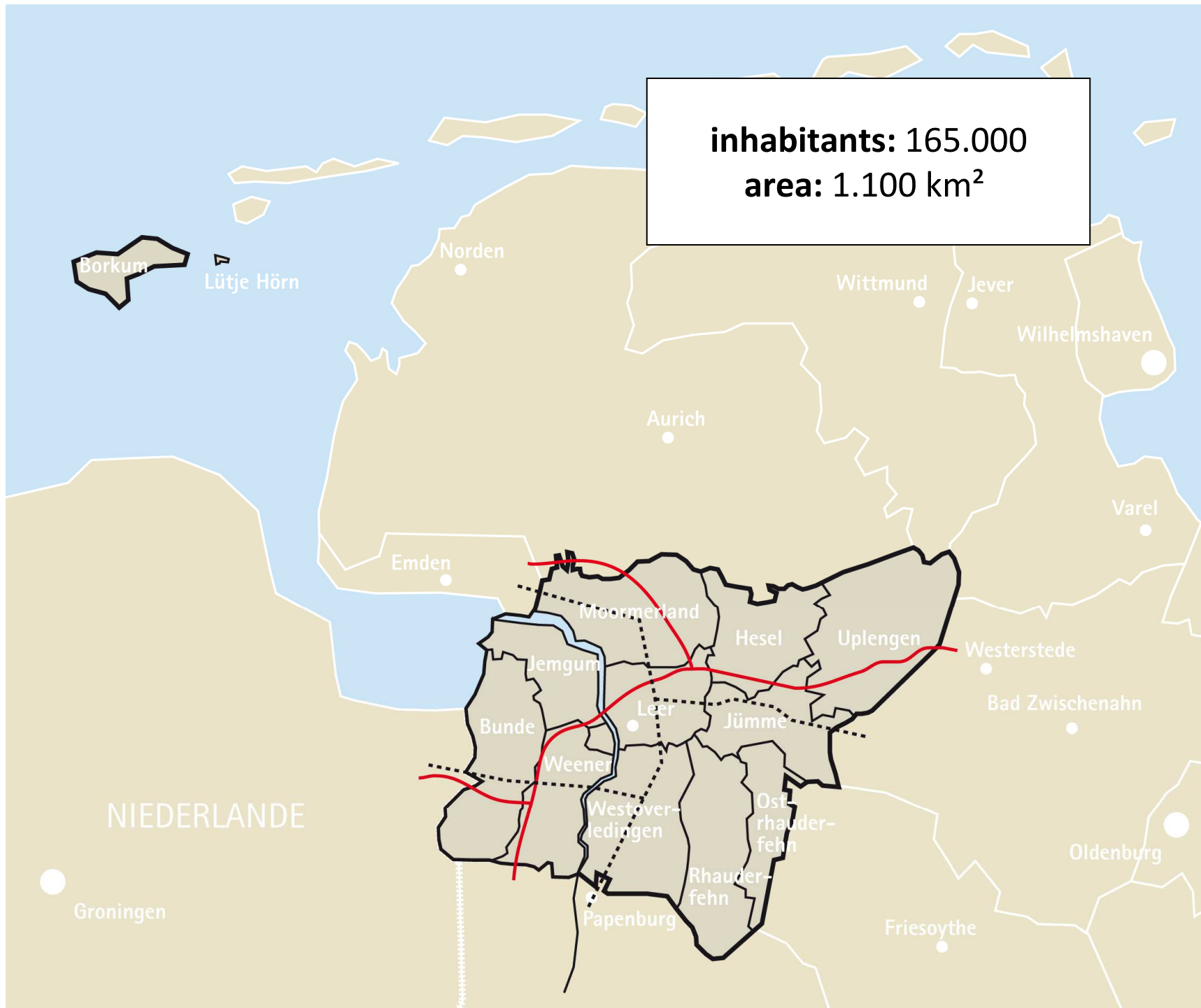
AEBR



Bernhard Bramlage



- **1986 – 1993:** City of Delmenhorst
- **1993 – 1997:** City of Northeim
- **1997 – 2001:** Landkreis (district) Leer
- **Since 2001:** Landrat Landkreis Leer







Cross-Border Cooperation Areas/Structures 2011

Régions/structures de coopération transfrontalière 2011

Regionen/Strukturen grenzübergreifender Zusammenarbeit 2011

Editing/Éditeur/Herausgeber:



Info@aebr.eu
www.aebr.eu

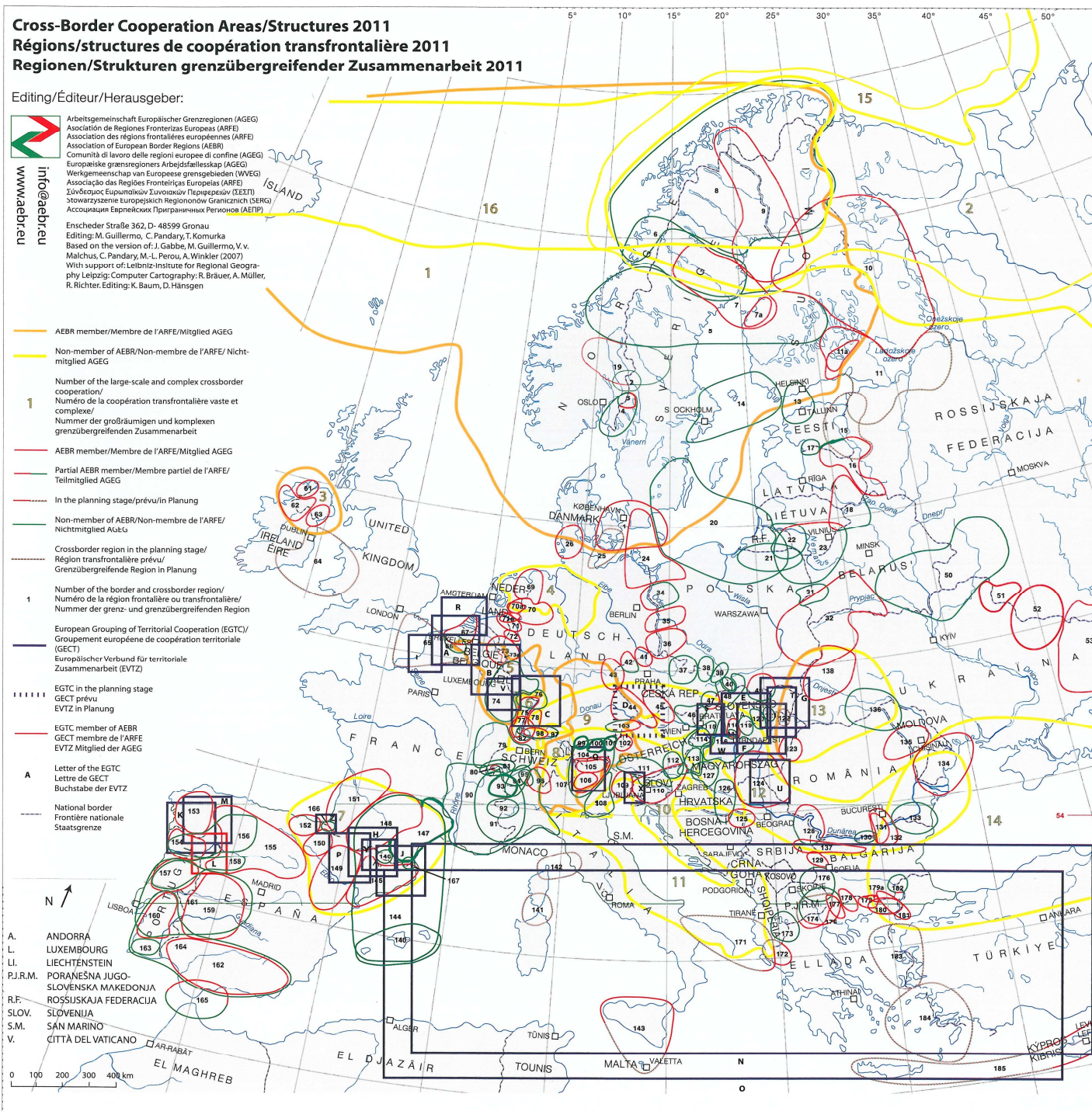
Arbeitsgemeinschaft Europäischer Grenzregionen (AGEG)
 Asociación de Regiones Fronterizas Europeas (ARFE)
 Association des régions frontalières européennes (ARFE)
 Association of European Border Regions (AEBR)
 Comunità di lavoro delle regioni europee di confine (AGEG)
 Europäische grensregionen Arbejdsfællesskab (AGEG)
 Werkgemeinschaft van Europese grensgebieden (WVEG)
 Associação das Regiões Fronteiriças Europeias (ARFE)
 Διεθνές Ευρωπαϊκό Σύλλογισμ Περικρήσιων (ΔΕΣΠ)
 Стоворужсые Европейских Регионов Границных (SERG)
 Ассоциация Европейских Приграничных Регионов (АЕПР)

Enscheder Straße 362, D- 48599 Gronau
 Editing: M. Guillermo, C. Pandary, T. Komurka
 Based on the version of: J. Gabbe, M. Guillermo, V. v. Malchus, C. Pandary, M.-L. Perou, A. Winkler (2007)
 With support of: Leibniz-Institute for Regional Geography Leipzig; Computer Cartography; R. Bräuer, A. Müller, R. Richter; Editing: K. Baum, D. Hänsgen

- AEBR member/Membre de l'ARFE/Mitglied AGEG
- Non-member of AEBR/Non-membre de l'ARFE/ Nichtmitglied AGEG
- 1** Number of the large-scale and complex crossborder cooperation/
 Numéro de la coopération transfrontalière vaste et complexe/
 Nummer der großräumigen und komplexen grenzübergreifenden Zusammenarbeit
- AEBR member/Membre de l'ARFE/Mitglied AGEG
- Partial AEBR member/Membre partiel de l'ARFE/ Teilmitglied AGEG
- - - In the planning stage/prévu/in Planung
- - - Non-member of AEBR/Non-membre de l'ARFE/ Nichtmitglied AGEG
- - - Crossborder region in the planning stage/
 Région transfrontalière prévu/
 Grenzübergreifende Region in Planung
- 1** Number of the border and crossborder region/
 Numéro de la région frontalière ou transfrontalière/
 Nummer der grenz- und grenzübergreifenden Region
- European Grouping of Territorial Cooperation (EGTC)/
 Groupement européenne de coopération territoriale (GECT)
 Europäischer Verbund für territoriale Zusammenarbeit (EVTZ)
- - - EGTC in the planning stage
 GECT prévu
 EVTZ in Planung
- EGTC member of AEBR
 GECT membre de l'ARFE
 EVTZ Mitglied der AGEG
- A** Letter of the EGTC
 Lettre de GECT
 Buchstabe der EVTZ
- - - National border
 Frontière nationale
 Staatsgrenze

- A. ANDORRÀ
- L. LUXEMBOURG
- LI. LIECHTENSTEIN
- P.J.R.M. PORANEŠNA JUGO-SLOVENSKA MAKEDONIJA
- R.F. ROSSJSKAJA FEDERACIJA
- SLOV. SLOVENIJA
- S.M. SAN MARINO
- V. CITTÀ DEL VATICANO

0 100 200 300 400 km



Ems-Dollart-Region



EDR





In the EDR-programme-area live ca. 2.8 million people
Low population density : NL (149 inhabitants/km²), D (139 inhabitants/km²)
National numbers: Germany: 231 inh./km², The Netherlands: 390 inhabitants/km²).

Ems-Dollart Region (EDR)

- founded in 1977 (as German and Dutch association)
- since 1997 public cross-border organisation
(based on Contract von Anholt 1991)
- 102 members, mainly municipalities and f.e. Chambers of Commerce
- cooperation German-Dutch cross-border organisation in the border area
- Center of Competence for German-Dutch cooperation
- network, coordination and cross-border service center



INTERREG IV A - Program 2007 - 2013

Priorities:

- economy, technology and innovation
- strengthening of (sustainable) regional development
- Integration and society

- total amount : EUR 295 million
- EU-share: EUR 138 million
- EDR region: EUR 38 million



Structures and Co-operation



Theme: energy, maritime, tourism, plastics, metal, farming, sensors, building, health, demography, labourmarket, logistics , water, nature, culture.

Cross-border cooperation in the border region:

f.e. consult citizens, education, public transport, hospitals, police, fire department

INTERREG IV A-Program 2007-2013

Implemented Projects

- sustainable energy Netherlands-Germany (NEND)
- network TOEKOMST (tourism) (€ 7,6 million – EU: € 3,4 million)
- food Future
- nature park development Bourtanger Moor-Bargerveen (NPE)
(€ 7,8 million – EU: € 3,9 million)
- framework project „Net(z)werk“ (€ 3,0 million – EU: € 1,5 million)
- MariStart - Maritime cooperation
- Mechatronics - innovation small- and medium sized enterprises
- Young Ems Dollart-philharmony (€ 524.000,- - EU: € 262.000,-)
- Maritime Technologies and Innovations – Model Region
Germany/The Netherlands (€ 8,7 million – EU: € 2,6 million)

MariTIM

Maritime Technologies and Innovations
– Model Region Germany/The Netherlands

Research and development of new propulsion technologies
for the ships of tomorrow

Unterstützt durch/Mede mogelijk gemaakt door:



INTERREG - Grenzregionen gestalten Europa
Europäischer Fonds für Regionale Entwicklung der Europäischen Union
INTERREG - Grensregio's bouwen aan Europa
Europees Fonds voor Regionale Ontwikkeling van de Europese Unie



Niedersächsisches Ministerium
für Wirtschaft, Arbeit und Verkehr

www.deutschland-nederland.eu



Ministerium für Wirtschaft, Energie,
Bauen, Wohnen und Verkehr
des Landes Nordrhein-Westfalen



provincie Drenthe



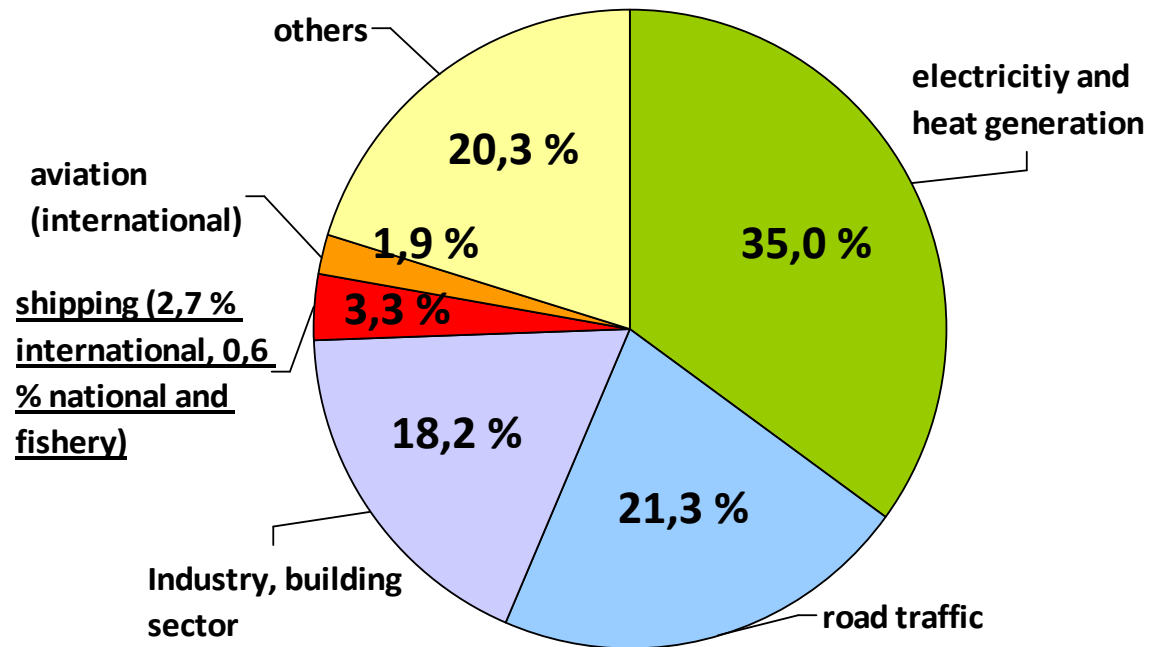
provinsje fryslân
provincie fryslân

Provincie Noord-Brabant

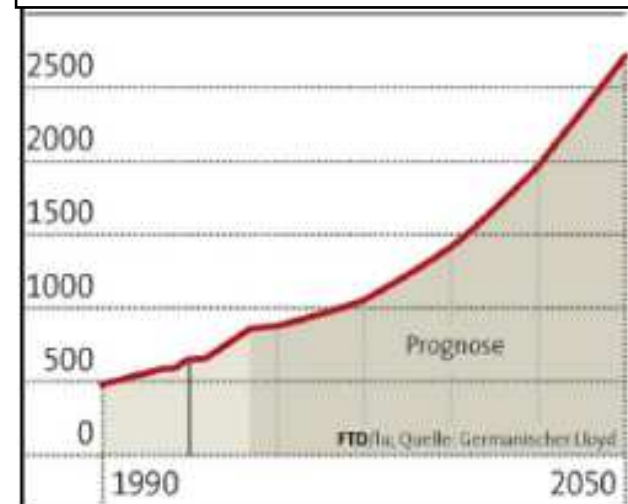


provincie
Gelderland

Climate-Sinner: Shares in the Global CO² Emissions 2007 in %



Worldwide from ships ejected CO² in mio. t





Stakeholder:

- scientific research
- university / college
- economy company
- classification company

35 German and Dutch partners

MariTIM



MariTIM

- **Duration:** January 2011 to December 2014
- **Total cost:** EUR 8,7 million
- **Financing:**
 - EU: 30% (EUR 2,6 million)
 - Germany 15% (EUR 1,3 million)
 - Netherlands 15% (EUR 1,3 million)
 - own resources 40% (EUR 3,5 million)

MariTIM



1. LNG Passenger Vessel

Examination of the technical and economic feasibility of LNG-electric propulsion systems in passenger shipping



2. ECO² Inland Vessel

Research and comparison of various (LNG-)propulsion concepts to identify the most efficient and economical propulsion for different types of inland shipping vessels



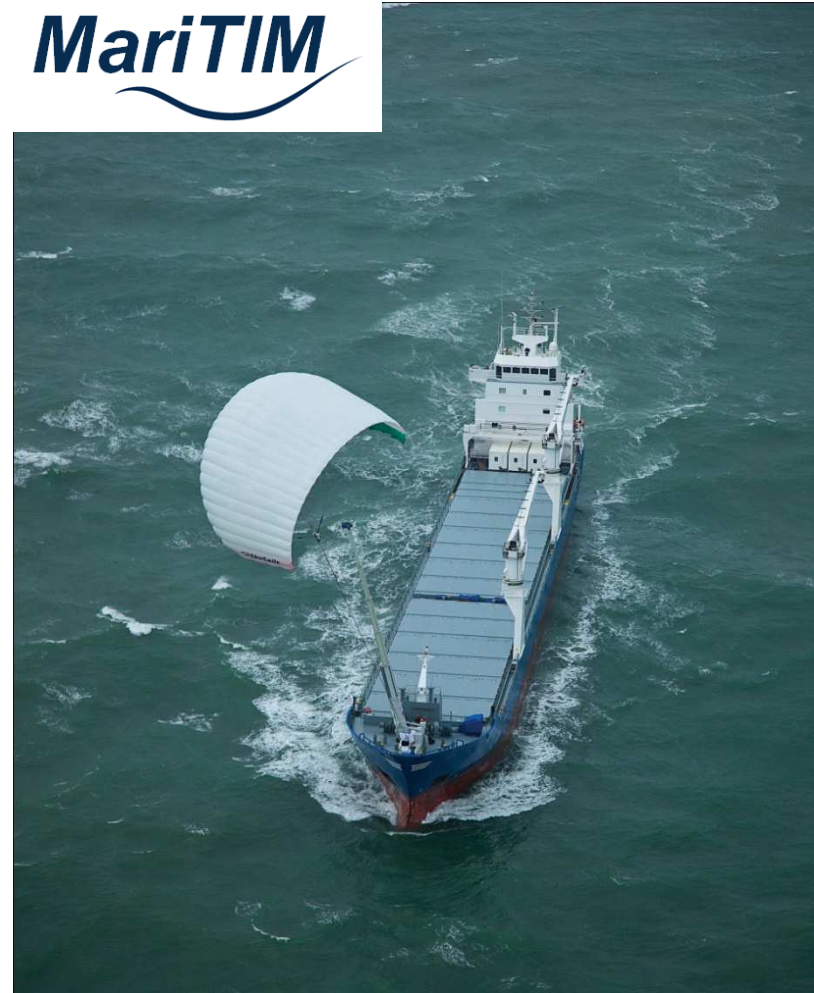
3. Wind Hybrid Coaster

Implementation of a lightweight design of a wind sail system with aerodynamic rotors for small coasters

MariTIM



MariTIM



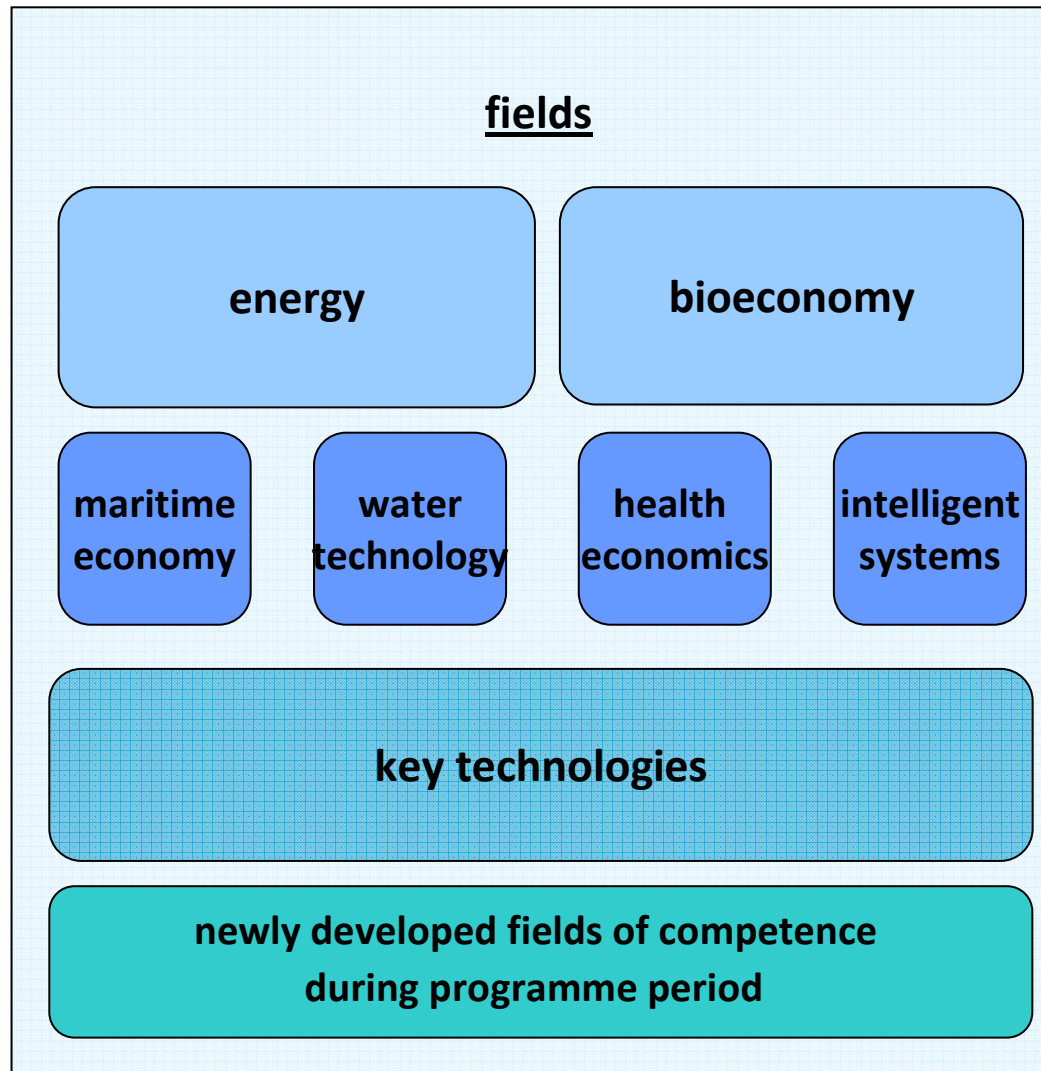
Future Challenges in the EDR

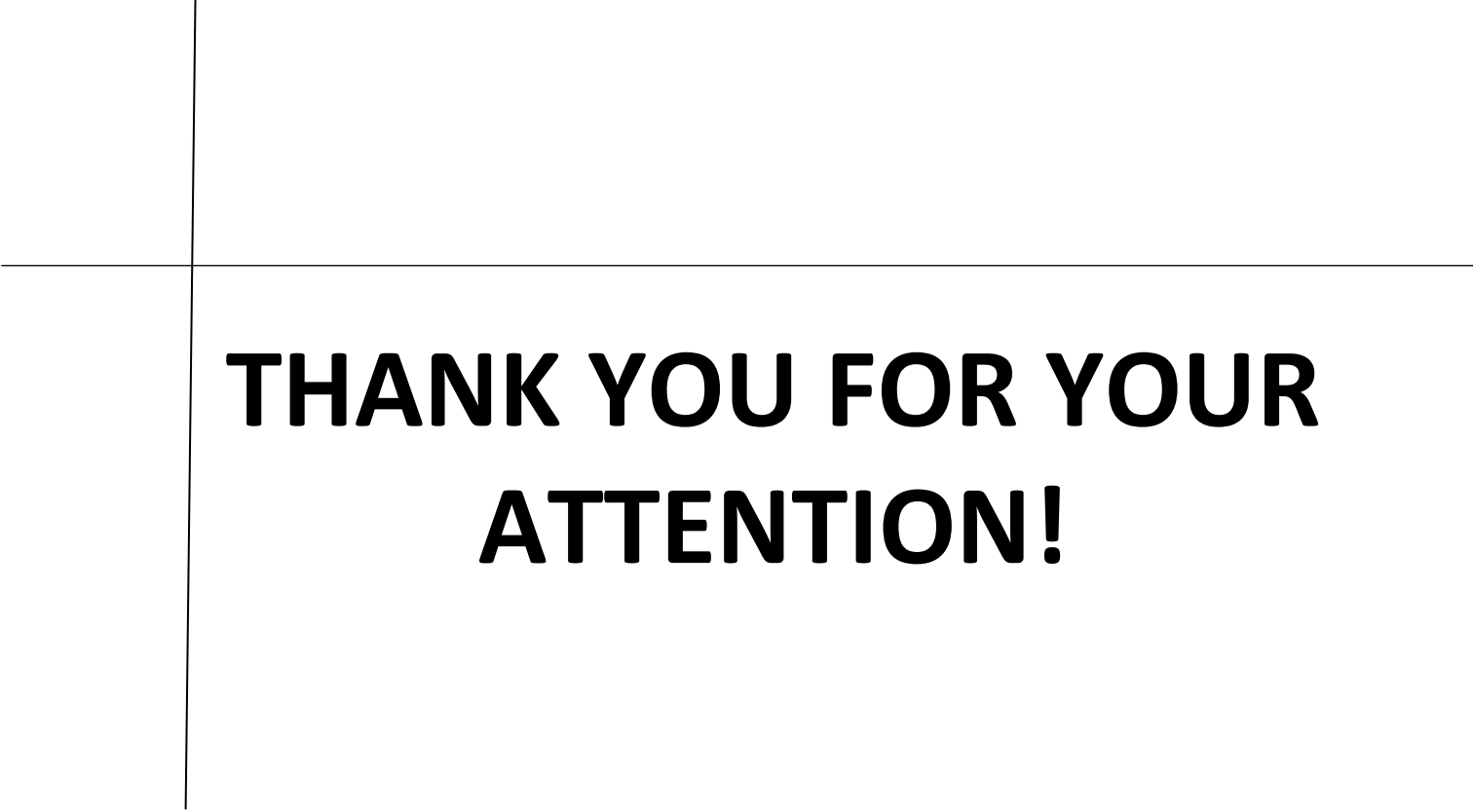
- increase competitiveness and attractiveness as economic region
- realise innovation potential of SME
- develop cross-border economic landscape
- react to demographic changes in an anticipatory way
- deal with threatening lack of qualified workforce
- deal with energy turnaround and improve energy efficiency
- strive to sustainable food supply
- recognize water as special challenge for the North
- counteract decrease of biodiversity
- maintain German-Dutch cooperation in a permanent manner

Objectives: Economy, Science, Innovation

- strengthening of cross-border science based cooperation in applied science, technological development, innovation and networking
- starting-point should always be benefit and need of enterprises (in particular SME)
- focus on regional fields of competence in the sense of smart specialisation (result of the analysis)

Objectives: Economy, Science, Innovation





**THANK YOU FOR YOUR
ATTENTION!**